



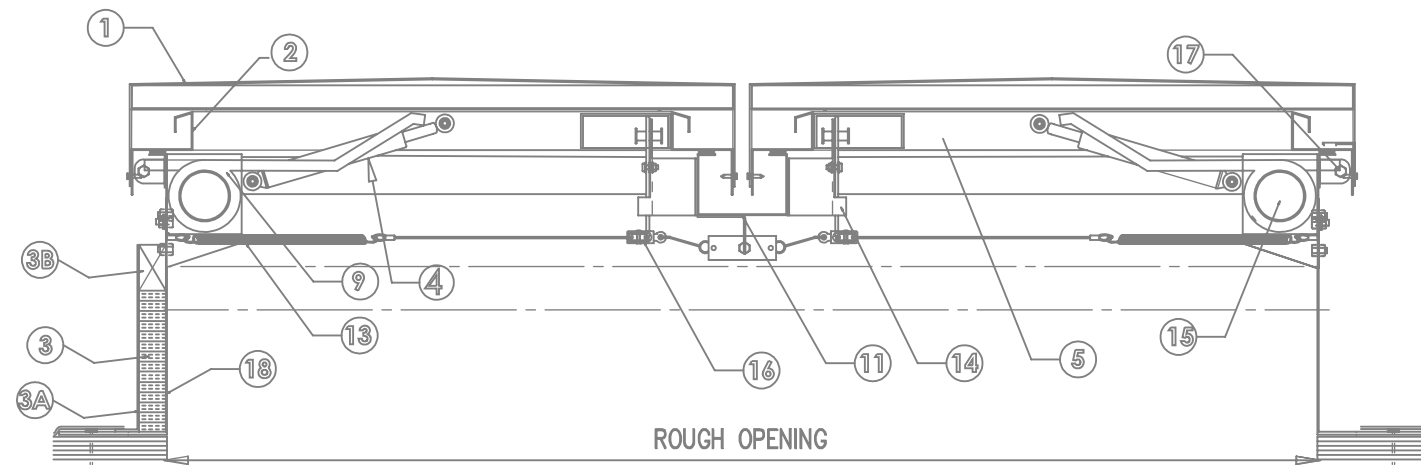
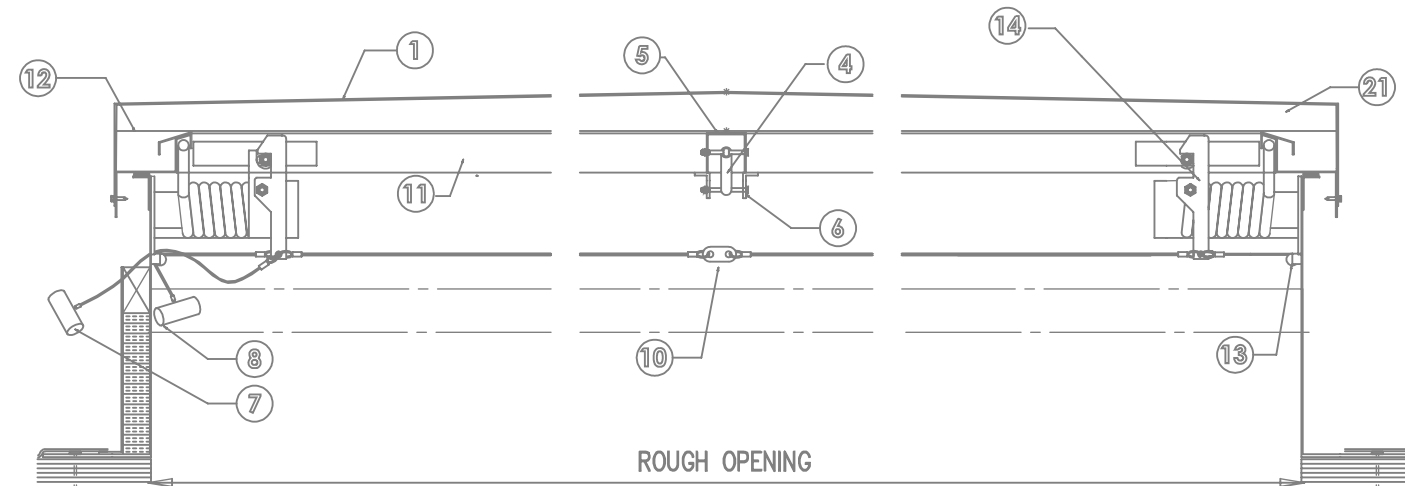
<b>FRAME FINISH</b>	<b>MANUAL RELEASE OPTIONS</b>
<input type="radio"/> MILL (UNFINISHED) <input type="radio"/> OTHER _____	<input type="radio"/> INTERIOR RELEASE <input type="radio"/> EXTERIOR RELEASE

<b>FUSIBLE LINK OPTIONS</b>	<b>SELF-FLASHING CURB OPTIONS</b>
<input type="radio"/> 212° UL/FM FUSIBLE LINK <input type="radio"/> 286° UL/FM FUSIBLE LINK <input type="radio"/> 350° UL FUSIBLE LINK <input type="radio"/> 360° UL/FM FUSIBLE LINK <input type="radio"/> 370° UL FUSIBLE LINK	<input type="radio"/> BASE HEIGHT <input type="radio"/> 7 INCHES <input type="radio"/> 12 INCHES (STANDARD) <input type="radio"/> OTHER _____ <input type="radio"/> 1" INSULATION <input type="radio"/> DUAL WALL LINER <input type="radio"/> WOOD NAILER

- ① GALV. STEEL CROSS BROKEN LID
- ② GALV. STEEL DOME FRAME
- ③ 1" INSULATION
- ③A DUAL WALL LINER
- ③B WOOD NAILER
- ④ SHOCK ABSORBER (DAMPENER)
- ⑤ SHOCK CHANNEL BRACKET @ LID
- ⑥ SUPPORT RAIL
- ⑦ EXTERIOR MANUAL RELEASE
- ⑧ INTERIOR MANUAL RELEASE (OPTIONAL)
- ⑨ DOOR SPRING (10 PSF)
- ⑩ UL/FM FUSIBLE LINK
- ⑪ GALV. STEEL MID. CHANNEL GUTTER
- ⑫ EPDM GASKET
- ⑬ TENSION SPRING
- ⑭ LATCH ASSEMBLY
- ⑮ GALV. STEEL BRACKET
- ⑯ PULLEY
- ⑰ HINGE
- ⑱ GALV. STEEL SELF-FLASHING FRAME
- ⑳ INSULATED DOOR

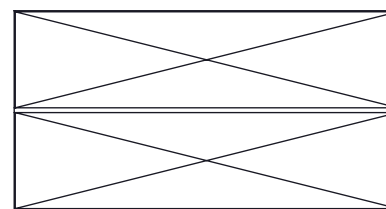
QTY	MODEL	DIMENSIONS	QTY	MODEL	DIMENSIONS
	4848	48" X 48"		6060	60" X 60"
	4872	48" X 72"		6072	60" X 72"
	4896	48" X 96"		6096	60" X 96"

UL Cert #: 20140401-R21627      UL 10PSF



**S-ULSV2D-ML-SF**

NOT TO SCALE



**PLAN VIEW**



**SIDE ELEVATION**



**END ELEVATION**

PROJECT :	
CUSTOMER :	
APPROVED BY:	DATE:
JOB NO. :	DATE NEEDED OR SHIP BY:
DATE SUB.:	Galvanized Steel Dual Metal Lid UL Smoke Vent Self-Flashing

REVISIONS	
△	_____
△	_____
△	_____

PAGE: 2.31