



FRAME FINISH	MANUAL RELEASE OPTIONS
<input type="radio"/> MILL (UNFINISHED) <input type="radio"/> OTHER _____	<input type="radio"/> INTERIOR RELEASE <input type="radio"/> EXTERIOR RELEASE

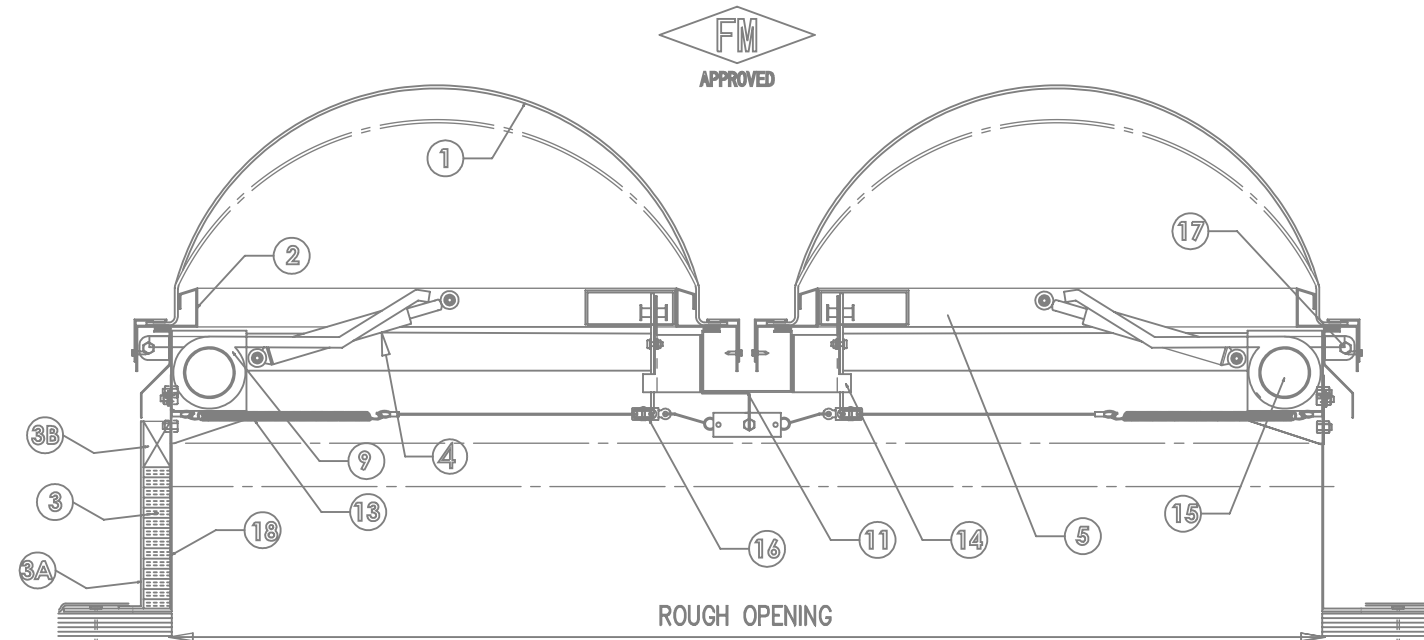
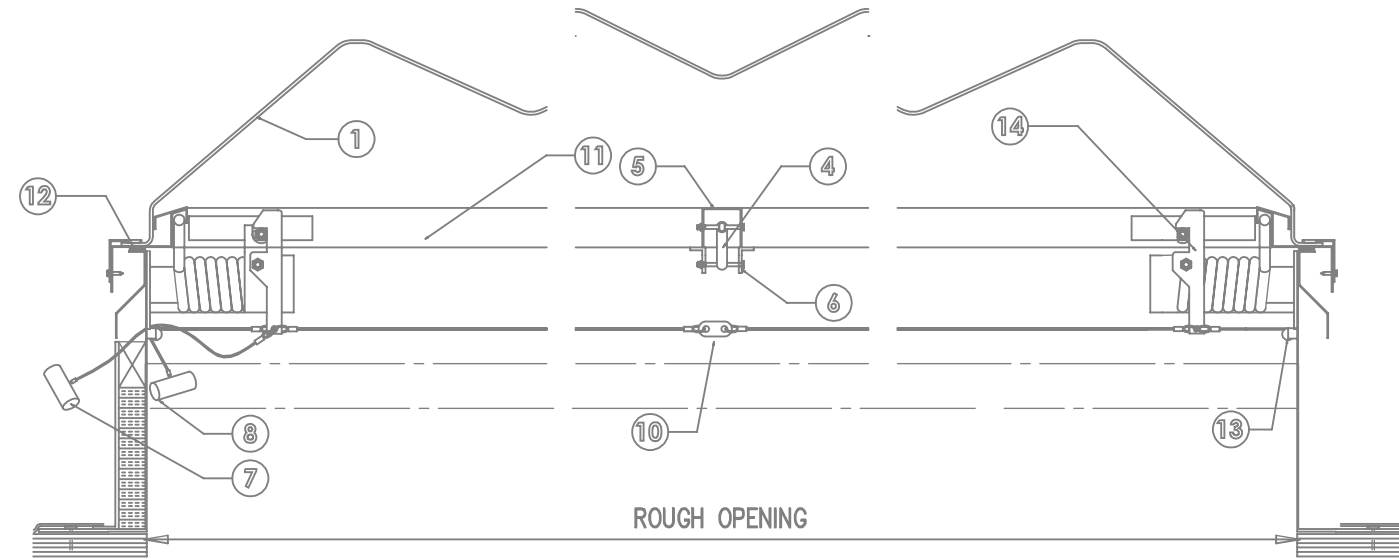
SKY-ARC™ SINGLE DOME GLAZING
OUTER GLAZING
<input type="radio"/> WHITE SKY-TOUGH™(ST),SKY-ARC™(SA) (UL-972 listed) <input type="radio"/> CLEAR SKY-TOUGH™(ST),SKY-ARC™(SA) (UL-972 listed)

FUSIBLE LINK OPTIONS	SELF-FLASHING CURB OPTIONS
<input type="radio"/> 360° FM FUSIBLE LINK	<input type="radio"/> BASE HEIGHT <input type="radio"/> 7 INCHES <input type="radio"/> 12 INCHES (STANDARD) <input type="radio"/> OTHER _____ <input type="radio"/> 1" INSULATION <input type="radio"/> DUAL WALL LINER <input type="radio"/> WOOD NAILER

- ① SKY TOUGH SINGLE DOME
- ② ALUMINUM DOME FRAME
- ③ 1" INSULATION
- ③A DUAL WALL LINER
- ③B WOOD NAILER
- ④ SHOCK ABSORBER (DAMPENER)
- ⑤ SHOCK CHANNEL BRACKET @ LID
- ⑥ SUPPORT RAIL
- ⑦ EXTERIOR MANUAL RELEASE
- ⑧ INTERIOR MANUAL RELEASE (OPTIONAL)
- ⑨ DOOR SPRING (10 PSF)
- ⑩ FM FUSIBLE LINK
- ⑪ ALUMINUM MID. CHANNEL GUTTER
- ⑫ EPDM GASKET
- ⑬ TENSION SPRING
- ⑭ LATCH ASSEMBLY
- ⑮ GALV. STEEL BRACKET
- ⑯ PULLEY
- ⑰ HINGE
- ⑱ ALUMINUM SELF-FLASHING FRAME

QTY	MODEL	DIMENSIONS	QTY	MODEL	DIMENSIONS
	4848	48" X 48"		6060	60" X 60"
	4872	48" X 72"		6072	60" X 72"
	4896	48" X 96"			

Snow Load: 10 psf Wind Uplift: 105 psf



A-FMSV2D-SF

NOT TO SCALE

FM Approvals Report No. : PR457696

PROJECT :	
CUSTOMER :	
APPROVED BY:	DATE:
JOB NO. :	DATE NEEDED OR SHIP BY:
DATE SUB.:	Aluminum Dual Lid FM Smoke Vent Single Dome Self-Flashing

REVISIONS	
△	_____
△	_____
△	_____
PAGE: 2.28	